

Ikegami

COMPANY PROFILE



TOP MESSAGE

Seeing the changing times as an opportunity, we will contribute to the realization of a sustainable society as well as improving our corporate value.

Our group, since its foundation in 1946, has been committed to contributing to society by developing four businesses:

- Broadcasting
- Medical
- Security
- Inspection

We respond to our customers' voices with diverse values, based on the management philosophy of contributing to society by continuing to provide products and services that earn and sustain the trust of customers through constant innovation. We will continue to be a company where everyone involved in its realization can find purpose in life and work.

Ikegami Tsushinki Co., Ltd.
President Yosuke Kiyomori



The business environment surrounding our group is undergoing unprecedented major changes due to the impact of climate change on the environment, changes in lifestyles caused by the COVID-19 pandemic, and geopolitical risks. In order to respond swiftly and aggressively to these changes, we will not only accelerate our efforts toward digital innovation such as AI and DX but also promote the development of an environment in which our employees, who are our group's human resources, can demonstrate their full potential.

Viewing the ever-diversifying changes of the times as great opportunities, our group will continue to strive to improve our core IP&T (Image, Process and Transmission) technology and make our customers' aspirations a reality. Our aim is to continuously improve our the group's corporate value. In addition, through these corporate activities, by actively working on activities that consider the three elements of ESG (Environmental, Social and Governance), we are contributing to the realization of a sustainable society.

*Advancing human aspiration
through the power of technology.*

Ikegami's purpose is to enhance the quality and enjoyability of life for every member of human society. We play our part in creating and sustaining a safe and secure social infrastructure by developing and delivering advanced technology and craftsmanship.



Solving social issues with imaging technology

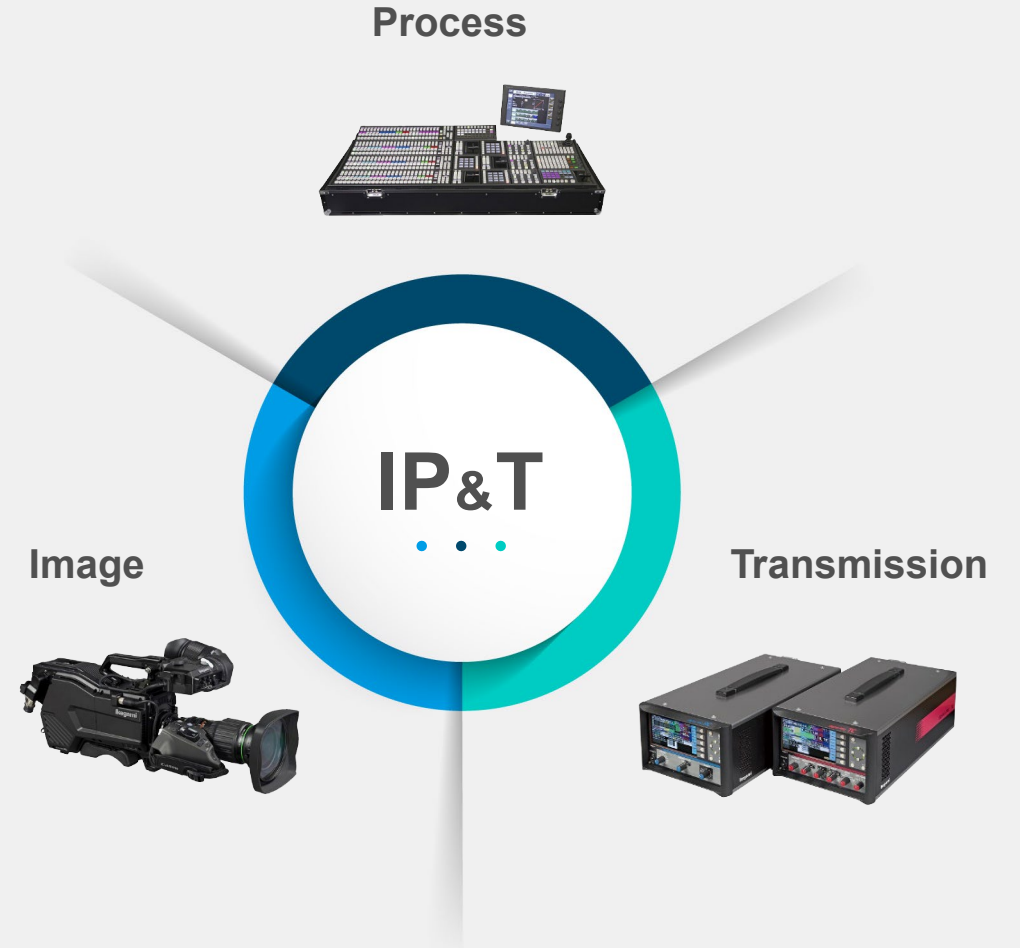
Toward a **sustainable** future

Imaging technology that supports the social infrastructure and business environment continues to advance. We are expanding the scope of its use, always pursuing cutting-edge technology and responding to various needs of our customers. The core of this activity is Ikegami's IP&T (Image, Process and Transmission).

Customer satisfaction forms the basis of our decision-making and judgment. We consider that society's issues are the source of our customers' issues. We believe that, by fusing core IP&T and related technology, embodying functions and performance is the path that leads to successful solutions.

“Continuing to be a company that gives shape to dreams.”

We will continue to be "professionals in video technology."



Social contribution in four business fields

Ikegami, as a professional who contributes to professionals, aims to anticipate and embody social needs through endless pursuit of CS customer satisfaction. With our commitment to quality and reliability, we will continue to refine cutting-edge technology and create new value. In addition, in order to realize a sustainable society that is safe, secure, and environmentally friendly, we aim to contribute to society by technology development without limit. Developing four businesses that provide solutions, we will continue to provide products and services that satisfy our customers.



As a professional in information communication and imaging, Ikegami Tsushinki Co., Ltd. is earnestly addressing various issues facing the world and contributing to the realization of a sustainable society through business activities.

ESG initiatives and SDGs goal

	Business Activity	Products	SDGs goal
Environment	<ul style="list-style-type: none"> • Introduction of ISO environmental management system • Reduction of greenhouse gas (CO2) emissions • Introduction of solar power generation equipment • Reduction of copy paper usage • Introduction of high-efficiency air conditioners • Adoption of low-energy LED lighting • Fujisawa killifish preservation • Compliance with RoHS regulation program 	<ul style="list-style-type: none"> • Development and sales of honeycomb catalyst inspect equipment • Development and sales of environmental care products 	
Social	<ul style="list-style-type: none"> • Response to human rights, environment, fair trade, etc. in accordance with CSR procurement guidelines • Protection and management of personal information • Promotion of diversity and work-life balance 	<ul style="list-style-type: none"> • Development and sales of medical camera and monitors • Development and sales of tablet inspection equipment • Development and sales of water sewage plant management system • Development and sales of transportation / disaster prevention monitoring system • Development and sales of river monitoring system • Participation in joint research such as industry/government/academia collaboration 	
Governance	<ul style="list-style-type: none"> • Proactive Information disclosure • Board diversity • Establishment of RC committee and office of internal audit 		

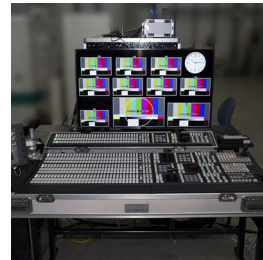


Solar power generation equipment at Product Center in Utsunomiya, Tochigi Prefecture



Participation in joint research such as industry/government/academia collaboration

Broadcasting



Providing the world with the latest technology that is always in demand

The Ikegami brand is active not only in Japan but also in broadcasting stations around the world.

As a manufacturer indispensable for broadcasting stations, we always focus on developing products that make full use of the latest technology.

We will continue to propose solutions that make full use of the latest technology in order to meet the needs of our customers.

Security

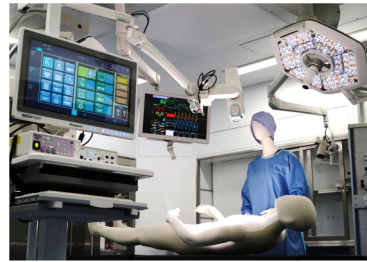


Providing systems for safety and security

Surveillance cameras, which were only used to "see" the situation, transitioned to recording, systematization and networking.

Along with the improvement of image quality, we have entered an era in which we can respond to various needs with System Integrator (SI) power by linking with various sensors and image processing technology. We will summarize and propose a wide range of technology trends related to security.

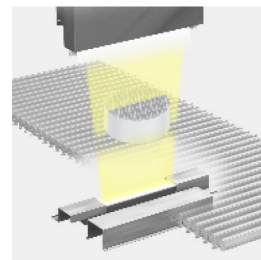
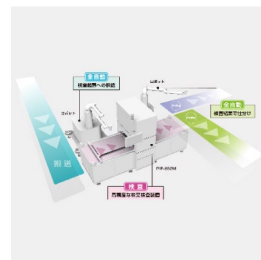
Medical



Achievements in the medical field is proof of trust

In addition to cameras for surgical microscopes, which boast the top market share in Japan, we are developing surgical field camera systems for operating rooms. We have built up a track record with the reliable performance required in the medical field and the function and operation style that embodies the doctor's intentions. In the future, we aim to penetrate the European, American and Asian regions.

Inspection / Image processing



To consistently deliver high quality

Our visual inspection equipment is suitable for monitoring a wide range of processes such as the manufacturer of medicines (tablets, capsules and granules), films, metal foils and containers.

DOMESTIC BASE

Head Office

〒146-8567 5-6-16 Ikegami, Ota-ku, Tokyo
TEL:03-5700-1111 FAX:03-5700-1137

Sales & Marketing

〒146-8567 5-6-16 Ikegami, Ota-ku, Tokyo
TEL:03-5748-2211 FAX:03-5748-2200

Osaka Branch

〒564-0052 Dai-ichi Esaka Bldg. 9-6 Hiroshiba-cho,
Suita City, Osaka
TEL:06-6389-4466 FAX:06-6389-4477

Nagoya Branch

〒465-0051 Kato 2nd Bldg. 1-1506 Yashirogaoka, Higashi-ku,
Nagoya City, Aichi
TEL:052-705-6521 FAX:052-705-6523

Kyusyu Branch

〒812-0016 ST Bldg. 4F 3-7-10 Hakata Eki Minami, Hakata-ku,
Fukuoka City, Fukuoka
TEL:092-451-2521 FAX:092-473-9214

Sendai Office

〒983-0869 Fuji Film Sendai Bldg. 6F 1-14 Teppo-cho Nishi,
Miyagino-ku, Sendai City, Miyagi
TEL:022-292-2420 FAX:022-292-2423

Sapporo Office

〒060-0031 Ichigo Sapporo Sousei 2nd Bldg. 5F 2-5-2 Kita 1-Jo
Higashi, Chuo-ku, Sapporo City, Hokkaido
TEL:011-231-8218 FAX:011-271-7801

Toyama Office

〒930-0004 Toyama Denki Bldg. 2F, 3-1 Sakurabashi Street,
Toyama City, Toyama
TEL:076-486-8148



System Center

〒251-8513 400 Kozuka, Fujisawa City,
Kanagawa
TEL:0466-24-8900 FAX:0466-24-8940

Product Center

〒321-0905 41-2 Hiraide Kogyo Danchi,
Utsunomiya City, Tochigi
TEL:028-660-3313 FAX:028-613-2206

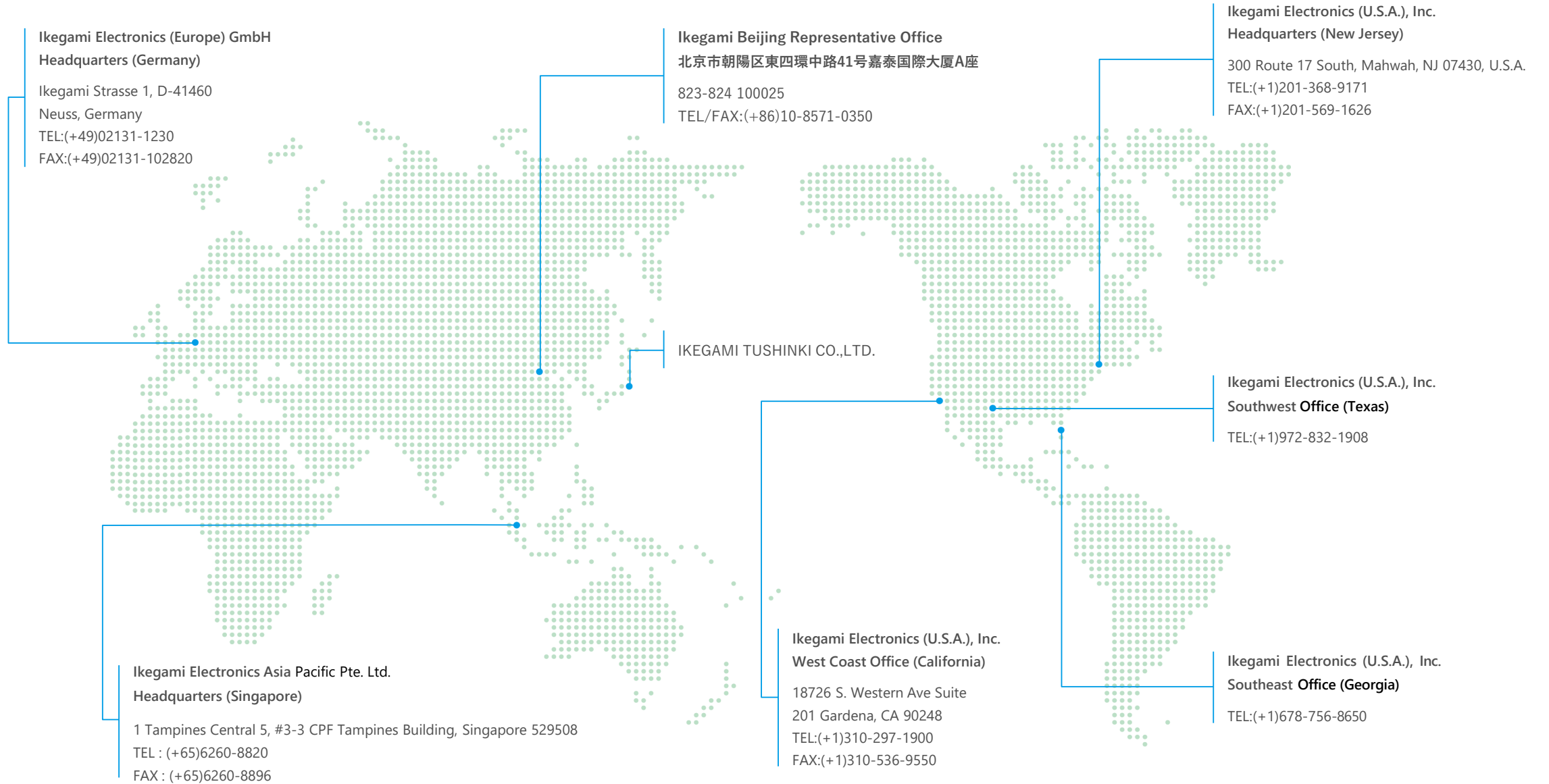
Procurement Center

〒146-8567 5-6-16 Ikegami, Ota-ku, Tokyo
TEL:03-5700-1107 FAX:03-5700-1143

Affiliate

Techno Ikegami Co., Ltd.
〒210-0826 4-13-15 Shiohama, Kawasaki-ku,
Kawasaki City, Kanagawa
TEL:044-270-5471 FAX:044-270-5493

GLOBAL NETWORK



COMPANY OVERVIEW

Company overview

Trade name	IKEGAMI TSUSHINKI CO.,LTD.
Employees	655(Consolidated 812) ※as of March 2025
Founding	February 21, 1948 ※Individual founding : September 10, 1946
Main products	Broadcast camera systems, Broadcast monitors, Video production systems, Video transmission systems, Mobile production equipment, Security camera systems, Medical camera systems, Visual inspection devices
Capital	7,000 million Japanese yen as of Mach 2025
Annual consolidated sales	20,734 million Japanese yen as of March 2025



ISO 9001
JQA-0755
Product Center
System Center
Procurement Center
Sales & Marketing
Techno Ikegami



ISO 14001
JQA-EM3888
Head Office
Product Center
System Center



JIS Q 9100
JQA-AS0156
Product Center
Procurement Center
Public Sales & Marketing
Techno Ikegami PC Engineering Dept. /
Service Engineering Dept.

Electronic equipment (HQH series) used in Maritime Self-Defense Force aircraft, and the design, development, manufacturing and incidental services of their accessory equipment.



ISO 13485
JQA-MD0133
Products Center
Image Process Solution Department
Procurement Center
Techno Ikegami CO., LTD.
PC Production Engineering Department
Microscope Accessories and
Video Monitors



ISO/IEC27001

ISO 27001
ISR025-J0725
Sales of Broadcasting Equipment and
Systems
Management of Information Technology
Systems

Directors / Auditors / Executive Officers (※as of April 1st, 2026)

Directors
President and Representative Director
Director
Director
Director
Director
Outside Director
Outside Director
Outside Director
Outside Director

Yosuke Kiyomori
Takaaki Aoki
Mutsumi Kojima
Hiroshi Shinoda
Jun Arakawa
Kenji Nagai
Kenji Susukida
Akiyo Yasuda
Katsuhiko Akitsu

Auditors (*Kansayaku*)
Corporate Auditor & Supervisory Board Member
Outside Auditor & Supervisory Board Member
Outside Auditor & Supervisory Board Member

Nobutsune Obara
Toshiharu Watanabe
Ushio Kawaguchi

Executive Officers
Senior Managing Executive Officer
Managing Executive Officer
Managing Executive Officer
Managing Executive Officer
Senior Executive Officer
Senior Executive Officer
Senior Executive Officer
Senior Executive Officer
Senior Executive Officer
Executive Officer
Executive Officer
Executive Officer
Executive Officer

Takaaki Aoki
Mutsumi Kojima
Kimihiro Tamura
Hatsuo Kitada
Hiroshi Shinoda
Jun Arakawa
Masayoshi Okuma
Hironori Miyauchi
Shinichi Tsugawa
Masayuki Akiyama
Nobuhiro Hioki
Kiyoshi Furukawa
Mie Yamamoto

HISTORY

1946 Founded by the first president, Kousei Saito, in Ota-ku, Tokyo, as “Ikegami Tsushinkizai Seisakusho” and started manufacturing small transformers for telecommunications equipment, power supply equipment, etc.

1948 Reorganized to “Ikegami Tsushinkizai Seisakusho Co., Ltd.”

1950 Developed automatic frequency response recorder. Contributed to the development of audio equipment in Japan.

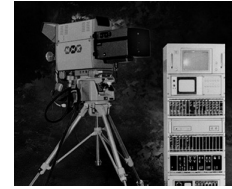
1951 Changed trade name to “Ikegami Tsushinki Co., Ltd.” Started manufacturing and sales of TV studio equipment.

1955 Developed a monoscope camera as the first step of our own product development. Supplied to all domestic receiver manufacturers as a receiver adjustment device.

1961 Listed on the Second Section of the Tokyo Stock Exchange.

1962 Supplied the first compact broadcast TV camera to CBS in the United States. The ‘Handy Looky’ was used for live coverage of the launch of the artificial satellite Aurora 7.

1964 Established US corporation Ikegami Electronics Industries Incorporated of New York. (Relocated to New Jersey in 1978)



1970 Established West German Representative Office in Dusseldorf. (Relocated to Neuss in 1978)

1971 Developed TK-301A color camera. Delivered to NHK and many commercial broadcaster stations. Established the foundation of ‘Ikegami Camera’.



1973 Developed medical camera MK-309. Entry into the medical electronics market.

1978 Developed HL-79A high-end color camera for indoor/outdoor program production.

1981 Won Emmy Award (Engineering Section) for the development of computerized automatic adjustment of studio cameras.



1983 Received Emmy Award for technical development of color camera .(EC-35)

1984 Stocks are listed on the First Section of the Tokyo Stock Exchange. Completed a nationwide video information service network for the Japan Racing Association using optical cable data communication lines, computer technology, etc. as a demonstration example for the news media era.

1986 Developed a new helicopter TV relay system. Effective for emergency reporting (TV stations) and rescue operations (police) in times of disaster.



HISTORY

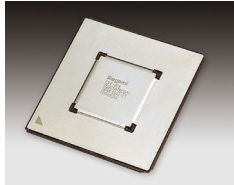


1989 Developed LK-33 3D color camera system yielding high-quality natural-looking images.

1994 Received 3rd Emmy Award for “Control edge enhancement technology” called “Skin-detail”



1995 Developed hard disk integrated broadcast camera recorder EDITCAM
Attracting attention as a new concept portable media tool



2000 Adopting 0.18mm manufacturing technology, developed cutting-edge broadcast camera ASIC.
This is the first time in the world that it is installed in a broadcast camera.

2001 Received a large order for a total of 37 HDTV camera systems from Nippon Television Network Corporation as broadcasting equipment for the Shiodome Headquarters

2002 Received bulk order for CCTV (surveillance camera) system for Taiwan High Speed Rail (Taiwan Shinkansen)

2004 Received a large order for 3,000 surveillance cameras as transportation network monitoring equipment for railways and buses operated by Paris Transport Authority “RATP”



2007 Developed a camera that can withstand the harsh space environment
Succeeded in high-definition movie shooting by the lunar orbiter "Kaguya (SELENE)"

2010 Received 4th Emmy Award for "development and commercialization of portable tapeless recorder"
* Joint award with US AVID TECHNOLOGY, INC.



2013 Developed a new concept system camera HDK-97ARRI in collaboration with German company ARRI
Received IABM Award

2014 Established Singapore corporation IKEGAMI ELECTRONICS ASIA PACIFIC PTE. LTD.

2015 Jointly developed the world's first handy type 8K Super Hi-Vision camera SHK-810 with NHK
Produced the world's first 8K Super Hi-Vision OB van

2020 Developed 4K/HD portable camera system UHK-X700
Developed the TIE-10000 tablet inspection system boasting the world's fastest throughput (700,000 tablets/hour)

2021 75th anniversary of foundation

2022 Transitioned to the Tokyo Stock Exchange Standard Market