

3D Full HD LCD Monitors

26 inch MLW-2626C-3D

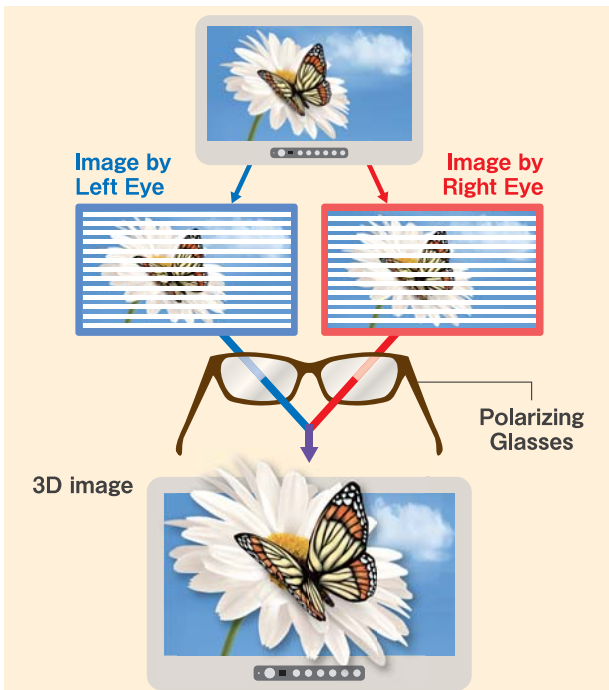
32 inch MLW-3226C-3D



MLW-2626C-3D

Polarizing System 3D (MLW-2626C-3D/3226C-3D)

By the polaroid film attached on LCD, images seen with right and left eyes are divided at each scanning line. This way is more comfortable to see 3D images by providing a flicker-free. It also has cost-performance benefits compared to conventional shutter-type 3D.



Applicable Diverse 3D Signals (HD-SDI x2 & DVI-D x2) (MLW-2626C-3D/3226C-3D)

Applicable to diverse 3D signals such as side by side, line by line, top & bottom and SIMAL(simultaneous). Two of input signals not only HD-SDI but also DVI-D are available. It is also possible to use as 2D monitor.



[Applicable Video Input]

Input Signal	Applicable Signal Format	Remarks
Video/ S-Video	BNC×1,S-Video×1 480i/59.94Hz (NTSC) 575i/50Hz (PAL-B)	Loop Through Output (x1ch)
PC (including Analog VIDEO)	D-SUB 15Pin×1 VGA,SVGA,XGA,SXGA*1,UXGA*1,WUXGA*1 HsVs,G-Sync,C-Sync(SD,HD is only G-Sync) 480/60i,575/50i,720/50,60P,1080/50, 60i,1080/50,60P	Y/Pb/Pr or RGB switchable Loop Through Output (x1ch)
DVI	DVI-D×2 480/60i,575/50i,720/50,60P,1080/50, 60i,1080/50,60P VGA,SVGA,XGA,SXGA*1,UXGA*1,WUXGA*1	Loop Through Output (x1ch)
SDI	BNC×2 SDTV:480/60i,575/50i HDTV:720/50P,720/60P,1080/60i, 1080/50i	Loop Through Output (x2ch)

*1:VF=60Hz,H/Vsync only 4

Multi-Display Function (2D display)

(MLW-2626C-3D/3226C-3D)

Two types of input images can be displayed simultaneously with Side-by-Side and Picture-in-Picture display mode.

Flip Function (2D display)

(MLW-2626C-3D/3226C-3D)

Images can be flipped horizontally and vertically, allowing the correction of image inversion caused by the optics.

LED Backlight Panel (MLW-2626C-3D)

LED backlight panel helps saving power. It also supports Higher brightness & Higher contrast than conventional LCD monitors.

HD-SDI 3G signal input (MLW-2626C-3D/3226C-3D)

The HD-SDI 3G signal can be input for the true progressive imaging and more suitable to natural images.

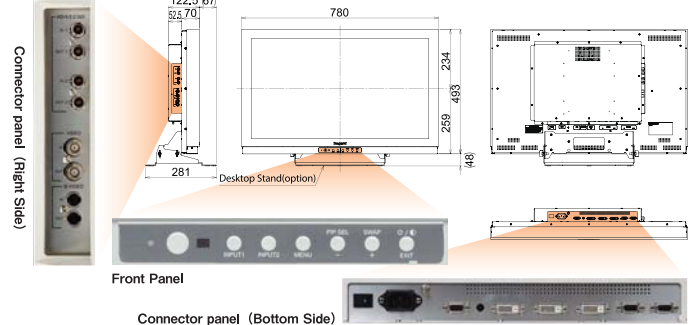
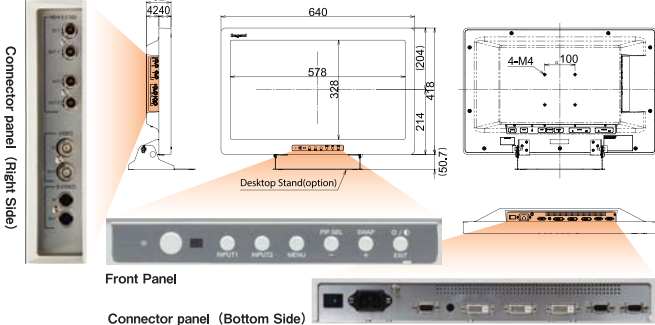
Specifications

		MLW-2626C-3D	MLW-3226C-3D	
LCD Panel	Panel Size	26-inch	32-inch	
	Pixels	1920 x 1080	1920 x 1080	
	Display Size	576 x 324mm	698.4 x 392.85mm	
	Aspect Ratio	16:9		
	Color Gradient	8-bit x 3 (16.7M)	10-bit x 3 (10.6B)	
Input Signal	SDTV	178° /178° (Typical)		
		Analog	VBS x 1ch Y/C x 1ch	
		Digital	Multi-SDI x 2 ch (output x 2 ch)	
	HD	Digital	Multi-SDI (3G) x 2 ch (output x 2 ch)	
		DVI	DVI-D x 2 ch (output x 1 ch)	
	PC/ Analog	RGB Analog	D-SUB x 1 ch (output x 1 ch)	
		Supported Resolution	VGA to WUXGA	
General	Multi Display	Picture in Picture or Side by Side swap display is available		
	Invert Top and Bottom or Right and Left Function	Standard		
	Remote Terminal	Serial		
	Resolutions (TVL)	1000TV Line or more (at component input)		
	Maximum Brightness	250c/dm ²	200c/dm ²	
	Contrast Ratio	1400:1 (Typical)	1300:1 (Typical)	
	Safety Approval	UL60601-1/CSA22.2No.601/EN60601-1		
	EMI Approval	FCC Class A / EN60601-1-2 /VCCI Class A		
	Power Requirement	AC100V to AC120V,AC200V to AC240V		
	Power Consumption	100W Max.	160W Max.	
	Operation	Temperature	5 ~ 35°C	
		Humidity	30 to 80% (non condensing)	
	Storage	Temperature	-20 to 60°C	
		Humidity	30 to 90% (non condensing)	
	Dimensions (excluding stand and protrusions)	W640 × H418 × D82mm	W780 × H493 × D122.5mm	
	Weight (excluding stand)	8kg	13kg	
	Remark	LED Backlight / Fanless Body / DC5V for Outside IF,1A Output / Protection Panel	DC5V for Outside IF,1A Output / Protection Panel	
Accessories	AC Power Cable / Manual			
Option	Desktop Stand TS-262	Desktop Stand TS-321		

Dimensions (mm)

MLW-2626C-3D

MLW-3226C-3D



Options

● Desktop Stand

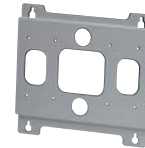


● TS-262



● TS-322

■ VESA Mount Adaptor



■ VM-3225
Convert 200×100mm pitch to 100×100mm pitch

Design and specifications are subject to change without notice.

Ikegami Tsushinki Co.,Ltd.

■ URL : <http://www.ikegami.co.jp/en/>

■ Head Office : 5-6-16 Ikegami, Ohta-ku, Tokyo 146-8567, Japan TEL.03-5700-1111 / FAX.03-5700-1137
 ■ Overseas Sales Division : 5-6-16 Ikegami, Ohta-ku, Tokyo 146-8567, Japan TEL.03-5700-4117 / FAX.03-5748-2200
 ■ Beijing Office : No.417 Jia Tai International Mansion, No. 41 East Fourth Ring Road, Chaoyang District, Beijing, China TEL.010-85711804 / FAX.010-85711804

Ikegami Electronics (U.S.A.), INC.

■ URL : <http://www.ikegami.com>

■ Headquarters : 37 BROOK AVENUE, MAYWOOD, NJ 07607 TEL.(201) 368-9171 / FAX.(201) 569-1626

Ikegami Electronics (Europe) GmbH

■ URL : <http://www.ikegami.de>

■ Headquarters : Ikegami Strasse 1, D-41460 Neuss, Germany TEL.02131-1230 / FAX.02131-102820
 ■ U.K. Branch : Unit E1 Cologne Court, Brooklands Close, Windmill Road, Sunbury-on-Thames, Middlesex TW16 7EB, England TEL.01932-769700 / FAX.01932-769710

U287A143-ED1

